



BEAMISH

THE LIVING MUSEUM OF THE NORTH

GROUP VISIT GUIDE



BE PART OF HISTORY AT BEAMISH MUSEUM

**Discover an amazing journey through
time with a group visit to
Beamish, The Living Museum of the North.**

Beamish, The Living Museum of the North, is the North East's most visited attraction, bringing history to life, with the unforgettable sights, sounds and delicious tastes of the 1820s, early 1900s, 1940s and 1950s.

No visit to North East England is complete without a trip to Beamish Museum!



**Visitors to our 350 acre site will be truly
immersed in history.**

There's so much to see and do at Beamish Museum.

Admire the spectacular views over the Georgian landscape, enjoy freshly-baked bread from the Edwardian bakery, head underground in a real coal mine, discover what life was like on the Home Front during the Second World War and take part in fun 50s activities in the welfare hall in The 1950s Town.



Remaking Beamish

The Remaking Beamish project is the biggest development in the museum's history, and includes a 1950s Town, 1950s Spain's Field Farm and expansion of the Georgian landscape, including self-catering accommodation, a Drovers' Tavern, pottery and toll house.

Thanks to money raised by National Lottery players, the Remaking Beamish project was awarded £10.9million by The National Lottery Heritage Fund in 2016.

New exhibits for 2023

A pair of police houses and their associated single-storey office, a pair of semi-detached houses, a bowling green and pavilion and a terrace of aged miners' homes will allow us to tell a whole host of new stories in The 1950s Town!

The new exhibits are part of the Remaking Beamish project.



1820s Pockerley

Visit Pockerley Waggonway and see the latest in Georgian technology! Enjoy a steam ride through the 1820s landscape and learn about cottage industries. Head to Pockerley Old Hall to find out what life was like in Georgian times and admire stunning views from the hall's terraced gardens.



1900s Pit Village and Colliery

Coal was king in the North East, visit The 1900s Pit Village to discover what life was like in mining communities across the region. Go back to school, find out what's growing in the gardens at Francis Street, see the pit ponies in their stables and visit the homes of the miners and their families.



1900s Town

Explore The 1900s Town and find out about life in a North East town in the years leading up to the First World War. Visit the homes in Ravensworth Terrace, call into the Co-op for a spot of Edwardian shopping and enjoy a delicious taste of the past at Herron's Bakery and Jubilee Confectioners.

1940s Farm

Experience life on the Home Front during the Second World War at The 1940s Farm. Learn about cooking with rations, Dig for Victory and Make Do and Mend. Say hello to the Land Girls, learn to drill with the Home Guard and climb into our Anderson Shelter and imagine what an air-raid would have been like.



1950s Town

Encapsulating the spirit of the 50s in North East England, our 1950s Town will transport visitors to a time of rock and roll, petticoats and pin curls! Experience the community spirit of the decade at the welfare hall, enjoy a tasty ice cream sundae and discover the artwork of Norman Cornish.



1950s Farm

Discover the story of upland farming in the North East during the 1950s, see traditional rural skills and discover the farm kitchen produce.

Spain's Field Farm was moved from Weardale. Around 1,170 tonnes of the farm's stone and timber were moved to the museum!

The farm is currently open on weekends initially to allow for the continuing construction work on our 1950s Town.



Enjoy year-round events

With an exciting year-long events programme, there's always something new to see and do at Beamish Museum. With your Beamish Unlimited Pass or Friends of Beamish membership you can come back time and time again for daytime events, pay once and visit free for a year!

For more information on special events, visit our website www.beamish.org.uk.

About Beamish, The Living Museum of the North

The museum was founded in 1970 by our first Director Frank Atkinson to preserve the region's heritage for future generations. 53 years on, we're the North East's most popular visitor attraction!

Beamish is 8 miles from Newcastle upon Tyne and 12 miles from Durham, and is signposted on the A1(M) J63, A68 and A693.



Reasons to book a group visit to Beamish Museum

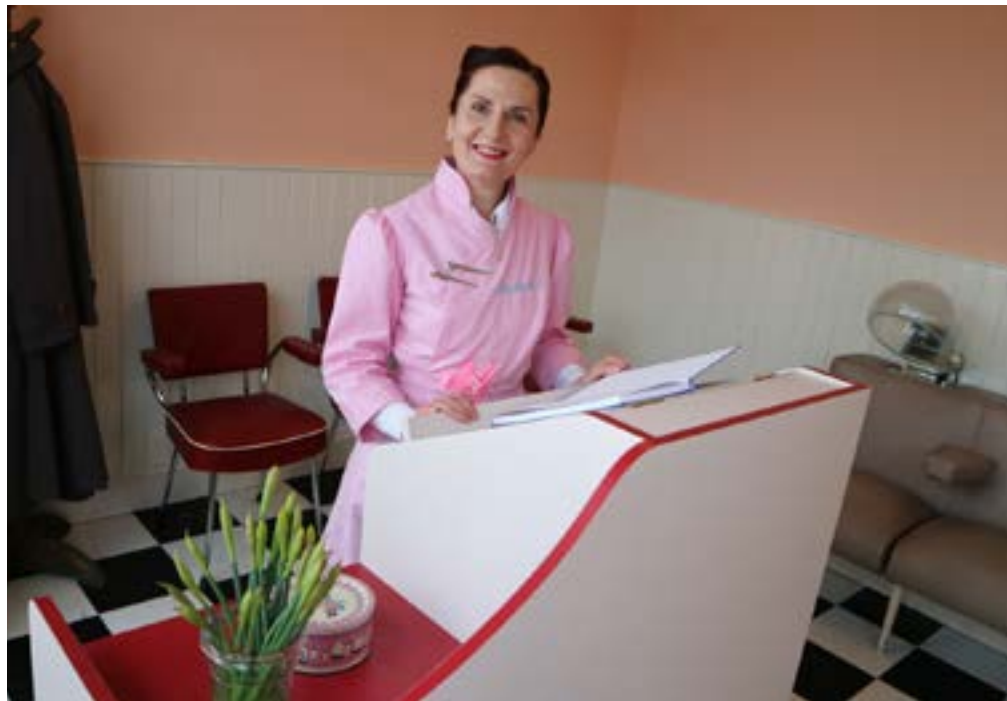
Discounted day admission for pre-booked groups of 15 or more.

Free admission for coach driver and group organiser.

Free coach parking on hardstanding.

Coach driver hospitality.

Free familiarisation visits for group organisers.



We're here to help

To find out more about group visits to Beamish Museum or to book a visit, please email bookings@beamish.org.uk, or tel. 0191 370 4026.

If you need photographs or information to help promote your trip, please email francescaboyle@beamish.org.uk or tel. 0191 370 4325.

Receive the latest news by signing up to our e-newsletter for groups, scan the qr code or visit <http://eepurl.com/dvBQ5P>.

