



NORTH EAST HORTICULTURAL SOCIETY AND BEAMISH MUSEUM ANNUAL SHOW

will be held on

 Saturday, 7th & Sunday, 8th September 2024 

TO BE HELD AT
BEAMISH
THE LIVING MUSEUM OF THE NORTH

From the North and South – Follow the A1M to Junction 63 (Chester-le-Street exit), then the A693 towards Stanley for 4 miles, following the signs.

From the West – Take the A68 to Castleside, near Consett, and follow the Beamish Museum signs along the A692 and A693 via Stanley.

Sat-nav users – our postcode is DH9 0RG.

OPENING TIMES: 10am - 5pm Saturday, 7th & Sunday, 8th September 2024

ALL EXHIBITS TO BE BENCHED BETWEEN 1PM AND 8PM ON FRIDAY, 6TH SEPTEMBER 2024
PRODUCE TO BE LIFTED FROM BENCHES AT 4.30PM SUNDAY, 8TH SEPTEMBER 2024

JUDGES

VEGETABLE JUDGE

A Read FNVS

FLOWER JUDGES

L McGough

E Payne

M Robbie

LEEK JUDGES

NPLS Rules: J Wilson

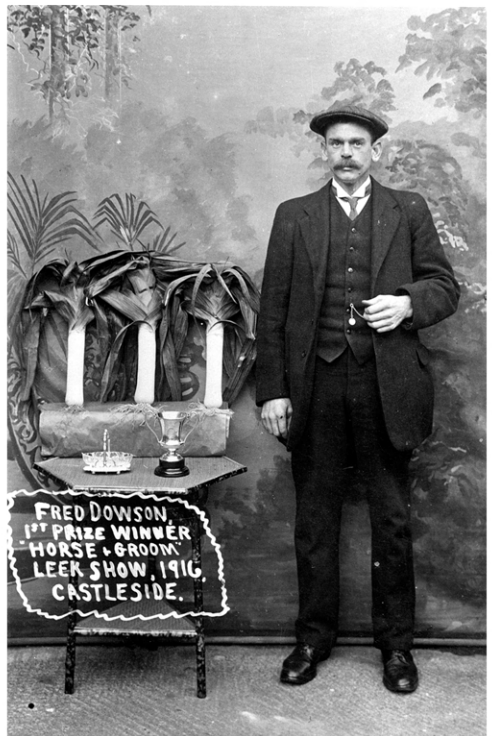
CIU Rules: J Keeler

Show Secretary: Alison Keeler: 10 Tyne Avenue, Leadgate, Consett, County Durham, DH8 6HB. 07951158719

*Museum entry is free to NEHS exhibitors throughout this event.
Please contact your Show Secretary for full details.*



Prizewinners, possibly of Durham Working Men's Club Leek Show, 26th September 1957.



Fred Dowson with three leeks which won him first prize in the Horse and Groom Leek Show, Castleside, 1916.



Leek Show in pub at Edmondsley, 15th October 1959.



Mr F Taylor showing his prize leeks from Pitlington Co-op Leek Show. 30th September 1955.



Flower Show, Durham Town Hall, October 1953.



Images from Beamish Museum Photographic archive

SHOW RULES

In the North East Horticultural Society Championships, entries are restricted to one per person per class.

Entry fees to the North East Horticultural Championships are itemised on the entry form. Entry is free of charge for North East Horticultural Society members. Annual membership of the Society is £10.

Entry forms are to be forwarded to the show secretary on or before 25th August 2024. Entries will be accepted on the day of benching provided there is sufficient space available and at the discretion of the show secretary and stewards.

Exhibitors will be able to access the venue between 1pm and 8pm (museum closes at 5pm) on Friday 6th September 2024 in order to bench their entries. Once exhibitors have staged their entries they will not be moved other than by a show steward.

The handling of exhibits, once judged, is strictly forbidden.

All exhibits to be staged and judged in accordance with the guidelines set out by the National Pot Leek Society (NPLS), the Club and Institute Union (CIU), the National Vegetable Society, the National Chrysanthemum Society and the National Dahlia Society apart from the Heaviest Vegetable Section, which will be judged under the Guinness Book of Records rules.

All flower and vegetable varieties are to be named on the cards provided.

The base of each onion staged must not be more than 150mm above the table.

Only judges, show officials and stewards will be allowed in the show area during judging.

No exhibit in any section will be lifted for any reason before the end of the show.

The judges' decisions are final.

These rules are to be viewed in conjunction with the show schedule.

SCHEDULE

LEEK SECTION

CLASS 1: TWO POT LEEKS (NPLS rules)

6 inch maximum length to button.

1st Prize £500. 2nd Prize £150. 3rd Prize £100. 4th Prize £50.

Prizes up to 10th place.

Sponsor: Green Fingers Garden Centre, South Shields

CLASS 2: TWO POT LEEKS (CIU rules)

6 inch maximum length to button.

1st Prize £500. 2nd Prize £150. 3rd Prize £100. 4th Prize £50.

Prizes up to 10th place.

Sponsor: John Soulsby

CLASS 3: TWO BLANCH LEEKS (NPLS rules)

14 inch minimum length to button.

1st Prize £75. 2nd Prize £50. 3rd Prize £25.

CLASS 4: TWO INTERMEDIATE LEEKS (NPLS rules)

Over 8 inch and up to 12 inch to button.

1st Prize £75. 2nd Prize £50. 3rd Prize £25.

CLASS 5: ONE POT LEEK, ONE INTERMEDIATE LEEK AND ONE BLANCH LEEK (NPLS rules)

All to regulation length.

1st Prize £75. 2nd Prize £50. 3rd Prize £25.

CLASS 6: ONE SUPER POT LEEK (NPLS rules)

7 inch maximum length to button.

1st Prize £15. 2nd Prize £10. 3rd Prize £5.

Other placings' prize money to be determined depending on level of entries for classes 1-6.

VEGETABLE SECTION

Sponsor (classes 7-14): Phil Moiser of the South Causey Inn

CLASS 7: A COLLECTION OF SIX KINDS OF VEGETABLE

Two of each kind. Tap root vegetable tops trimmed to 76mm approximately. Space allowed - 900mm frontage x 1200mm deep. To be staged flat.

1st Prize £50. 2nd Prize £30. 3rd Prize £20.

CLASS 8: MINI COLLECTION OF FIVE KINDS OF VEGETABLE

Four of each kind from the following: Potatoes, Stump Carrots, Beetroot, Peas, Tomatoes or Onions (250g). Tap root vegetable tops trimmed to 76mm approximately. Space allowed - 600mm frontage x 1200mm deep. To be staged flat.

1st Prize £30. 2nd Prize £20. 3rd Prize £10.



CLASS 9: A COLLECTION OF FOUR VARIETIES OF VEGETABLE

Three of each kind. Vegetables to be 15 points and under, as classified by the National Vegetable Society. Garlic, Kale, Kohl Rabi, Lettuce, Marrow, Mushroom, Onions (250g or under, sets, salad or spring), Oriental Brassica, Peas (mangetout, petit pois or sugar snap), Pepper (chilli or sweet), Pumpkin, Radish or Rhubarb. Space allowed - 600mm frontage x 750mm deep. To be staged flat.

1st Prize £25. 2nd Prize £15. 3rd Prize £10.

CLASS 10: A COLLECTION OF FOUR KINDS OF VEGETABLES

One of each kind. Tap root vegetable tops trimmed to 76mm approximately. Space Allowed - 900mm frontage x 1200mm deep. To be staged flat.

1st Prize £25. 2nd Prize £15. 3rd Prize £10.

CLASS 11: THREE LARGE DRESSED EXHIBITION ONIONS

Tied with natural raffia. Staging allowed.

1st Prize £20. 2nd Prize £15. 3rd Prize £10.



CLASS 12: THREE DRESSED ONIONS

Over 1kg - Under 1.5kg. Tied with natural raffia. Staging allowed.

1st Prize £20. 2nd Prize £15. 3rd Prize £10.

CLASS 13: FIVE DRESSED ONIONS - Under 250g

1st Prize £20. 2nd Prize £15. 3rd Prize £10.

CLASS 14: ONION CHAMPIONSHIPS - FIVE LARGE DRESSED EXHIBITION ONIONS - Tied with natural raffia. Staging allowed.

1st Prize £50. 2nd Prize £30. 3rd Prize £20.

CLASS 15: THREE LONG CARROTS

Tops trimmed to 76mm approximately.

1st Prize £20. 2nd Prize £15. 3rd Prize £10.



CLASS 16: THREE STUMP ROOTED CARROTS

Tops trimmed to 76mm approximately.

1st Prize £20. 2nd Prize £15. 3rd Prize £10.

CLASS 17: THREE LONG PARSNIPS

Tops trimmed to 76mm approximately.

1st Prize £20. 2nd Prize £15. 3rd Prize £10.

CLASS 18: THE BRITISH POTATO CHAMPIONSHIPS

One dish of five coloured potatoes.

1st Prize £30. 2nd Prize £20. 3rd Prize £10.

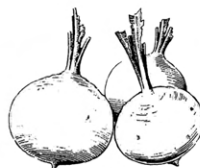
CLASS 19: THE BRITISH POTATO CHAMPIONSHIPS

One dish of five white potatoes.

1st Prize £30. 2nd Prize £20. 3rd Prize £10.

CLASS 20: NINE TOMATOES

1st Prize £15. 2nd Prize £10. 3rd Prize £5.



CLASS 21: TWO CELERY - Pink or white dressed.

1st Prize £15. 2nd Prize £10. 3rd Prize £5.

CLASS 22: TWO CAULIFLOWERS

With a minimum of 76mm stalk and leaves trimmed.

1st Prize £15. 2nd Prize £10. 3rd Prize £5.



CLASS 23: BEETROOT

Globe, one dish of three. Tops trimmed to 76mm approximately.

1st Prize £15. 2nd Prize £10. 3rd Prize £5.

CLASS 24: DISH OF SIX PEAS

1st Prize £15. 2nd Prize £10. 3rd Prize £5.

CLASS 25: DISH OF SHALLOTS - Large Exhibition, dish of twelve.

1st Prize £15. 2nd Prize £10. 3rd Prize £5.

HEAVIEST VEGETABLE SECTION

ALL PRODUCE TO BE FIT FOR TABLE

CLASS 26: HEAVIEST ONION

1st Prize £300. 2nd Prize £100. 3rd Prize £50.

Sponsor: Beveridge Nurseries.

CLASS 27: HEAVIEST LEEK

1st Prize £100. 2nd Prize £30. 3rd Prize £15.

Sponsor: Leadgate CIU Club.

CLASS 28: HEAVIEST MARROW

1st Prize £20. 2nd Prize £15. 3rd Prize £10.

CLASS 29: HEAVIEST CABBAGE. Shown with washed root.

1st Prize £20. 2nd Prize £15. 3rd Prize £10.

CLASS 30: HEAVIEST TOMATO

1st Prize £20. 2nd Prize £15. 3rd Prize £10.

CLASS 31: LONGEST CUCUMBER

1st Prize £20. 2nd Prize £15. 3rd Prize £10.



FLORAL SECTION

EXHIBITORS ARE TO PROVIDE OWN VASES

CLASS 32: ONE VASE OF GLADIOLI. Three stems.

1st Prize £15. 2nd Prize £10. 3rd Prize £5.

CLASS 33: ONE VASE OF ONE STEM GLADIOLI

1st Prize £15. 2nd Prize £10. 3rd Prize £5.

CLASS 34: FIVE VASES OF DAHLIAS.

Three blooms per vase. Not less than three cultivars.

1st Prize £30. 2nd Prize £15. 3rd Prize £10.

CLASS 35: ONE VASE OF GIANT DAHLIAS

Three blooms per vase. Can be shown in separate vases.

1st Prize £15. 2nd Prize £10. 3rd Prize £5.

CLASS 36: ONE VASE OF DECORATIVE DAHLIAS LARGE

Three blooms per vase.

1st Prize £15. 2nd Prize £10. 3rd Prize £5.

CLASS 37: ONE VASE OF DECORATIVE DAHLIAS MEDIUM

Three blooms per vase.

1st Prize £15. 2nd Prize £10. 3rd Prize £5.

CLASS 38: ONE VASE OF DECORATIVE DAHLIAS SMALL

Three blooms per vase.

1st Prize £15. 2nd Prize £10. 3rd Prize £5.

CLASS 39: ONE VASE OF SMALL/MINIATURE BALL DAHLIAS

Three blooms per vase.

1st Prize £15. 2nd Prize £10. 3rd Prize £5.

CLASS 40: ONE VASE OF CACTUS/SEMI-CACTUS DAHLIAS LARGE

Three blooms per vase.

1st Prize £15. 2nd Prize £10. 3rd Prize £5.

CLASS 41: ONE VASE OF CACTUS/SEMI-CACTUS DAHLIAS MEDIUM

Three blooms per vase.

1st Prize £15. 2nd Prize £10. 3rd Prize £5.

CLASS 42: ONE VASE OF CACTUS/SEMI-CACTUS DAHLIAS SMALL

Three blooms per vase.

1st Prize £15. 2nd Prize £10. 3rd Prize £5.

CLASS 43: ONE VASE OF POM POM DAHLIAS

Three blooms per vase.

1st Prize £15. 2nd Prize £10. 3rd Prize £5.

CLASS 44: ONE VASE OF COLERETTE DAHLIAS

Three blooms per vase.

1st Prize £15. 2nd Prize £10. 3rd Prize £5.

CLASS 45: THREE VASES OF THREE DAHLIAS

Any variety or varieties.

1st Prize £20. 2nd Prize £15. 3rd Prize £10.



CLASS 46: THREE VASES OF A SINGLE BLOOM DAHLIA

Three different classifications.

1st Prize £15. 2nd Prize £10. 3rd Prize £5.

CLASS 47: FIVE VASES OF CHRYSANTHEMUMS

Three blooms per vase. Not less than three cultivars.

1st Prize £30. 2nd Prize £15. 3rd Prize £10.

CLASS 48: THREE VASES OF CHRYSANTHEMUMS

Three blooms per vase. Three different cultivars.

1st Prize £20. 2nd Prize £15. 3rd Prize £10.

CLASS 49: ONE VASE OF MEDIUM INCURVE CHRYSANTHEMUMS

Three blooms per vase.

1st Prize £15. 2nd Prize £10. 3rd Prize £5.

CLASS 50: ONE VASE OF LARGE INTERMEDIATE CHRYSANTHEMUMS

Three blooms per vase.

1st Prize £15. 2nd Prize £10. 3rd Prize £5.

CLASS 51: ONE VASE OF MEDIUM INTERMEDIATE CHRYSANTHEMUMS

Three blooms per vase.

1st Prize £15. 2nd Prize £10. 3rd Prize £5.

CLASS 52: ONE VASE OF LARGE REFLEX CHRYSANTHEMUMS

Three blooms per vase.

1st Prize £15. 2nd Prize £10. 3rd Prize £5.

CLASS 53: ONE VASE OF MEDIUM REFLEX CHRYSANTHEMUMS

Three blooms per vase.

1st Prize £15. 2nd Prize £10. 3rd Prize £5.

CLASS 54: ONE VASE OF EXHIBITION SPRAY CHRYSANTHEMUMS

Five stems per vase. One distinct cultivar.

1st Prize £15. 2nd Prize £10. 3rd Prize £5.

CLASS 55: ONE VASE OF FLOWERS FOR FRONTAL EFFECT

Decoration allowed.

1st Prize £15. 2nd Prize £10. 3rd Prize £5.

CLASS 56: ONE VASE OF 5 BLOOMS OF CHRYSANTHEMUMS

Any variety or varieties.

1st Prize £25. 2nd Prize £15. 3rd Prize £10.

CLASS 57: ONE VASE OF 3 P.F. CARNATIONS (self's)

1st Prize £15. 2nd Prize £10. 3rd Prize £5.

CLASS 58: ONE VASE OF 3 P.F. CARNATIONS (fancy)

1st Prize £15. 2nd Prize £10. 3rd Prize £5.

CLASS 59: ONE VASE OF 7 P.F. CARNATIONS

Any variety or varieties.

1st Prize £15. 2nd Prize £10. 3rd Prize £5.

CLASS 60: MIXED BOWL OF CARNATIONS

1st Prize £15. 2nd Prize £10. 3rd Prize £5.

CLASS 61: CARNATION CHAMPIONSHIP

One vase of three fancy. One vase of three self. One vase of three grower's choice.

1st Prize £20. 2nd Prize £15. 3rd Prize £10.

CLASS 62: ONE POT PLANT FLOWERING - Maximum 7 inch pot.

1st Prize £15. 2nd Prize £10. 3rd Prize £5.

CLASS 63: ONE POT PLANT FOLIAGE

Maximum 7 inch pot.

1st Prize £15. 2nd Prize £10. 3rd Prize £5.



PRODUCE TO BE AUCTIONED AT 3.30PM
ON SUNDAY, 8TH SEPTEMBER

BEAMISH MUSEUM

AUTUMN AND WINTER EVENTS

Home Front, Home Farm – 14th & 15th September

Classic Car Day by NECPWA – 29th September

Harvest Celebrations – 5th & 6th October

Tractor Gathering – 19th & 20th October

October Half Term – 26th October to 3rd November

Remembrance Sunday – 10th November

Christmas at Beamish
23rd November to 24th December 2024

EVENING EVENTS

Halloween Evenings*

Monday 28th October, Tuesday 29th October, Thursday 31st October

Christmas Evenings*

(6th, 12th, 13th, 19th & 20th December)

*Evening events are separately ticketed events.

Beamish Unlimited Passes and Friends of Beamish memberships are not valid for evening events.

THE NORTH-EAST HORTICULTURAL SOCIETY CHAMPIONSHIP SHOW 2024 ENTRY FORM

Entries to reach the Show Secretary by Friday 23rd August 2024

(Entries on Show day allowed providing space available)

Posted entries to:

Alison Keeler, 10 TYNE AVENUE, LEADGATE, CONSETT, COUNTY DURHAM, DH8 6HB

Telephone: 07951158719 (telephone entries will not be accepted)

E-mail: joesmob@hotmail.com

Please enter me in the following classes (tick the box for the class(es) you wish to enter.

1	2	3	4	5	6	7	8	9	10	11	12	13	14	15	16	17
18	19	20	21	22	23	24	25	26	27	28	29	30	31	32	33	34
35	36	37	38	39	40	41	42	43	44	45	46	47	48	49	50	51
52	53	54	55	56	57	58	59	60	61	62	63					

Entry fees for the North-East Horticultural Championships are as follows:

A single entry has a fee of £5. Multiple entries will cost £10 (classes 1-6) or £10 (classes 7-63)

Entry is free of charge for North East Horticultural Society members for classes 7-63

Entries are restricted to one person per class.

Prize money will be paid by cheque by post.

Entry fees total: £

(Cheques to be made payable to The North-East Horticultural Society)

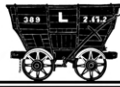
Name:.

Address:

Postcode:

Telephone:

ALL EXHIBITORS MUST PROVIDE THEIR FULL NAME AND ADDRESS



BEAMISH

THE LIVING MUSEUM OF THE NORTH

THE BEAMISH CHALLENGE

Saturday, 7th and Sunday 8th September 2024

There are certificates and rosettes up for grabs! The categories are as follows:

HOMEGROWN VEGETABLES (As pulled, tops on, cleaned). SATURDAY.

3 beetroots

3 pea pods

A miniature garden

3 onions

3 tomatoes, with stalks

Any misshapen vegetable

3 carrots

3 apples, with stalks and leaves

Tray of mixed vegetables, judged on variety and quality

3 pears, with stalks and leaves



FLORAL ARRANGEMENTS. SATURDAY.

A mixed arrangement of any garden flowers and foliage

3 best sweet peas in a jar (adults and childrens sections)



CRAFT SECTION. SATURDAY.

Knitted or crocheted toy

Photos - Beamish through the seasons

Knitted or crocheted garment

Children's Drawing - Picture with an animal (Ages up to 6, 7-10 and 11+)

Quilting or patchwork

Handmade woodwork piece

Lace or embroidery

Hand-tied fishing flies

Tapestry or cross stitch

Peg doll (adults' and children's sections)

INDUSTRY SECTION. SUNDAY.

Homemade Bread (not machine)

Victoria Sponge (no cream)

1 Fruit Jam

Cheese Scones

Marmalade

Shortbread

Lemon Curd



Children's - Best Decorated Cupcake (cake itself doesn't need to be homemade)

Corned Beef Pie

Entries to be recieved at show marquee by 11am on both days. Judging will be completed by 1pm both days. Produce to be auctioned at 3.30pm on Sunday, 8th September (excluding craft items which can be returned to owner).

Entry to Beamish is required, but there is no extra charge to enter The Beamish Challenge.

Entering our challenge and enjoying the North East Horticultural Cultural Society Championship Show is included in museum entry and is free to Beamish Unlimited Pass holders and Friends of Beamish members.