



BEAMISH

THE LIVING MUSEUM OF THE NORTH

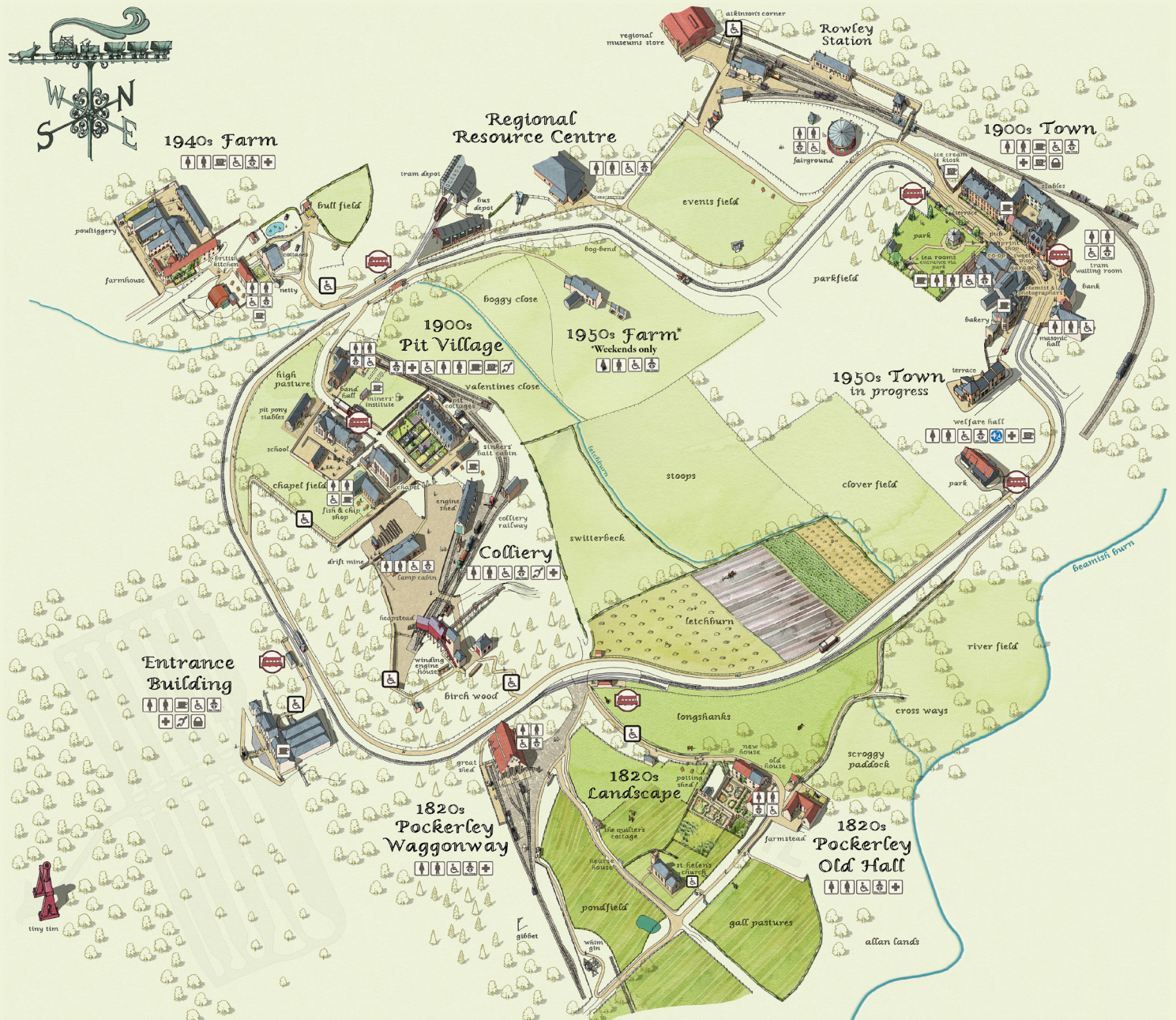


Access Information for Visitors

Welcome to Beamish

Beamish is a large open air museum with many historic buildings, sights, sounds, smells, tastes and textures to experience.

This guide will give you helpful information to use during your visit. If you need any further assistance or have any questions, please ask a member of the Beamish team.



Walking distances from Entrance Building

- To The 1900s Pit Village - 440 yards | 402 metres | 5 minutes
- To The 1820s Landscape - 616 yards | 563 metres | 8 minutes
- To The 1940s Farm - 774 yards | 707 metres | 9 minutes
- To The 1900s Town - 1,091 yards | 998 metres | 12 minutes

Accessible Parking

Free accessible parking is at the lowest level of our car park to the left of the Entrance building. Please let our parking attendants know if you require accessible parking.

Assistance Bus

An assistance bus, with a tail lift transports visitors around the site. Please note, the bus is not able to transport motorised scooters. More information about the assistance bus can be found on the back page of this booklet.

Wheelchairs

A limited number of free wheelchairs are available from the Entrance Building, these can be hired with 24 hours' notice.

Motorised Scooters

Visitors are welcome to use personal motorised scooters. As Beamish is a large open air museum, we encourage visitors to fully charge their scooters before arrival as there are no charging points at the museum.

Visitors can hire motorised scooters for a £12 charge and a refundable £25 deposit. Deposits will be refunded following return of the hired scooter in the expected condition at the end of your visit. You must give us at least 24 hours' notice if you are unable to attend the museum for your motorised scooter booking. If we do not receive at least 24 hours' notice we will be unable to refund the deposit.

Bookings are on a first come, first served basis from www.beamish.org.uk/accessibility. Guidance maps will be provided on arrival. All motorised scooters must be used along pedestrian routes, taking care to avoid collisions and blocking paths. Visitors are not permitted to use motorised scooters on the roads around the museum.

Defibrillators

Defibrillators are available. If a visitor feels ill during their visit and requires a defibrillator, please contact a member of staff immediately.

Assistance Dogs

Assistance dogs are welcome throughout the museum.

Photo Packs

Within historic areas we have a number of files of photographs and information which can be viewed by visitors unable to access an exhibit.

Lighting

In order to accurately represent life in the past, some exhibits in the museum are dimly lit or use natural lighting. Visitors with visual impairments may have difficulty in these areas.

Our Breastfeeding Friendly Pledge

We are part of the County Durham Breastfeeding Friendly Scheme and are committed to supporting families to breastfeed.

Dementia Friends

Many members of our staff and volunteers are Dementia Friends, look out for people wearing their knitted or crocheted versions of the "forget me not" badges.

Entrance Building



Access from the car park to the Entrance building is via a sloping path. There is level access within the Entrance building.



Access to the museum site is from the rear of the Entrance building via a winding, downward sloping path to the tram stop.



A second path with rest points and with an upward incline starting at the tram stop, leads to the exit of the museum.



Male, female and accessible toilets (left hand and right hand transfer). Baby and adult changing facilities. A Reliant 350 Stand Assist is available for use.

1900s Pit Village



The pit cottages are accessible via level paths and a small step to the rear. A ramp is available for access into the cottages. Please ask a member of staff if you require assistance.



There is accessible entry to the chapel via a level entrance to the rear of the building.



Accessible entry to the school is via a path around the side of the building with a level entry doorway at the rear.



Male, female and accessible toilets (right hand transfer) are available at Hetton Silver Band Hall.

1900s Pit Village



Davy's Fried Fish Shop is accessible via a slightly sloped path which passes around the chapel. There is flat entry into the shop.



The pit pony stables are accessible via a slightly sloping path.



The band hall is accessible via the path to the right of the building. There is a level access doorway to the rear of the building.



An accessible toilet (right hand transfer) is available at Hetton Silver Band Hall.

1900s Colliery Yard



The lamp cabin is accessible via a sloping, paved walkway from The 1900s Pit Village.



Access to the engine house is via a steep ramp or by steps. Please be advised that this ramp may not be suitable for wheeled access.



A sloping path leading through the woods to The 1820s Landscape can be accessed from behind the lamp cabin. A shorter path across a section of railway track is to the left of the engine house. This path may be closed on occasion during some colliery events.



The drift mine has very low ceilings in parts, it is not suitable for wheelchair users who cannot alight from their chair. Light levels may not be suitable for those with visual impairments. Photo packs are available for viewing at the lamp cabin.



Accessible toilets (right hand transfer) are available in the lamp cabin in The Colliery Yard, where there are also baby changing facilities.

1820s Landscape



There’s a slightly sloped accessible path that leads from The Waggonway to the quilter’s cottage and St Helen’s Church.



There is level access to the quilter’s cottage.



There is a slightly sloping, gravel path taking visitors around the cottage’s garden.



Access to St Helen’s is flat and level via the main door.



The nearest accessible toilets (right hand transfer) are located at The Waggonway. Accessible toilets (left hand transfer) and baby changing facilities are located at Pockerley Old Hall.

1820s Pockerley Old Hall



Access to Pockerley Old Hall is via a long, steep, sloped path from Pockerley tram stop. There are several rest points. Please be advised that the mixed terrain and slopes leading to Pockerley Old Hall can be difficult for wheeled access.



Access is flat and level around the garden via gravel paths.



There is level access to the new house from the scullery at the rear of the building.



Access to part of the old hall is via narrow, steep stone steps.



Accessible toilets (left hand transfer) and baby changing facilities are located at the side of the building via a flat, level path.

1820s Waggonway



The platform can be reached via an accessible path which passes around the front of the engine shed.



We have a wheelchair accessible carriage at The Waggonway. Please let a member of the team know if you require assistance.



There are accessible toilets (right hand transfer) at the side of engine shed. The nearest baby changing facilities are located at Pockerley Old Hall.

1940s Farm



The 1940s Farm can be accessed via a long, sloping path with rest points. It is a short walk from the tram stop.



A short, steep slope on the left or a longer sloping path to the right provide access to The 1940s Farm which is a little further up the bank.



Orchard Cottage has accessible entrances through the front and back doors. Garden Cottage has level access to the front however, there are steps within the exhibit.



Visitors must cross a main road to gain access to the farmhouse. There is an accessible path into the farm yard and the farmhouse kitchen.



Accessible toilets (right hand transfer) are located to the rear of the British Kitchen.

1900s Town



The bakery is accessible via a single step into the exhibit. There is a flat level entry door to the side of the building.



Flat entry to the chemist's and photographers'. The photographers' is accessed via the chemist's.



Accessible toilets (male – right hand transfer, female – left hand transfer) are available in the Tea Rooms, Masonic Hall (right hand transfer) and the tram shelter (male – left hand transfer, female – right hand transfer).

1900s Town



The terraced houses have stepped access. Photo packs are available in the Masonic Hall.



There is an accessible entrance to the sweet shop to the right of the building, this route is the exit route for the sweet shop. To access the sweet shop, please join the queue and a member of staff will help you access the exhibit via the accessible entrance.



There is an accessible entrance to the Masonic Hall and the Bank Board Room via a lift from street level.



There is flat level entry to the Co-op hardware store only. Photo packs are available in the Masonic Hall.



Accessible toilets (male – right hand transfer, female – left hand transfer) are available in the Tea Rooms, Masonic Hall (right hand transfer) and the tram shelter (male – left hand transfer, female – right hand transfer).

Rowley Station



Please note, Rowley Station is currently open for viewing only. No trains currently run from the station.



Rowley Station is a short walk from The 1900s Town, crossing a footbridge which has steps on the station side. There is a further set of stairs onto the platform.



Wheelchair users can gain access to the station via a path through The Fairground and Rowley Station goods yard. The surfaces of the path are varied.



A section of railway track is crossed to reach the cobbled path to the platform.



The cobbled path is on an uphill gradient, but a short walk to the platform.



Accessible toilets (right hand and left hand transfer) and baby changing facilities are available at The Fairground.

The Fairground and Events Field



A wide, gravel path runs through The Fairground. The surfaces of the path are varied.



Rides change from time to time. Please speak to a member of staff for access information for the current ride.



The hill from the Events Field towards the Regional Resource Centre is steep. A handrail is in place at the steepest point. Please be advised that the steep slope can be difficult for wheeled access.



Accessible toilets (right hand and left hand transfer) and baby changing facilities are available at The Fairground. Accessible toilets (left hand transfer) available at the Regional Resource Centre.

1950s Town



Front Street terrace has a tarmac road and a level flagstone path with dropped kerbs. There are cobbles at the edge of the town but these can be avoided by using the paths and dropped kerbs.



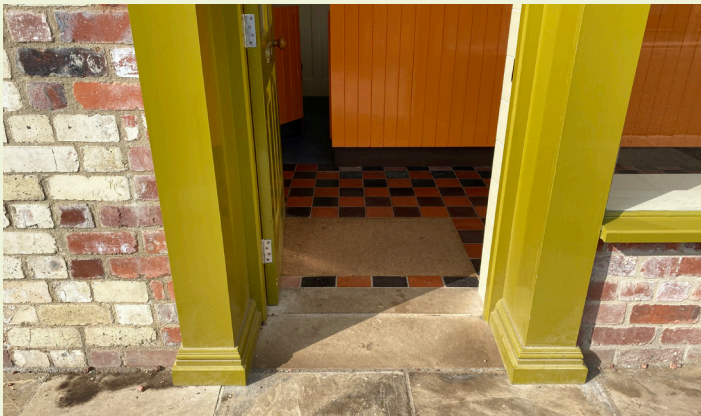
Elizabeth's Hairdresser's
Level entrance into the hairdresser's.



No. 2 Front Street
Level entrance into No. 2 Front Street. There is a lift available for those wishing to visit the first floor and the accessible art space.



John's Café
Level access into the café, accessible booths available.



Middleton's Quality Fish and Chips
Level access into and out of fish and chip shop. High counter.



Accessible toilets (right hand transfer) and baby changing facilities are available in John's Café.

1950s Spain's Field Farm (Open weekends only)



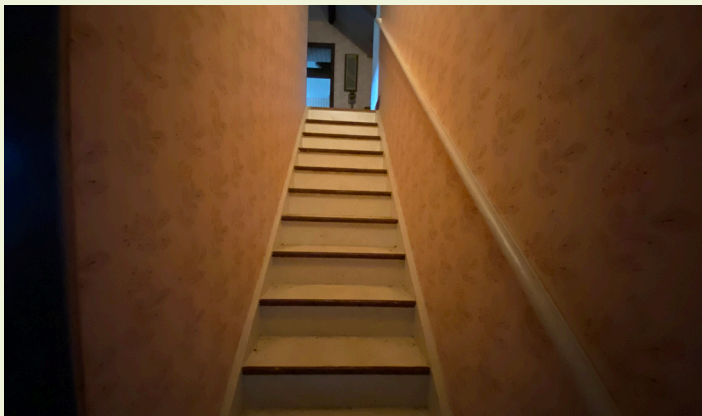
The farm is currently open during weekends only, this is to allow for the continuing construction work on our 1950s Town.



Access to Spain's Field Farm is via a wide path with uneven surfaces and loose stone.



Level access into the farmhouse.



There is a dark, narrow staircase to the first floor of the farmhouse.



There is level access into the main byre.



An accessible toilet (right hand transfer) is available at Spain's Field Farm (farm currently open weekends only).

1950s Welfare Hall



A slightly sloping footpath surrounds the exhibit and there are accessible ramps at all entrances.



There is level access throughout the 1950s welfare hall with the exception of the stage which has access via steps.



There is a dedicated baby changing and feeding room available for use. Please ask a member of staff for assistance.



Accessible toilets (right hand and left hand transfer), Changing Places Facilities and baby changing and feeding facilities are available within the 1950s welfare hall.

1950s Welfare Hall, Changing Places Facilities



Our 1950s welfare hall features Changing Places facilities, including a wash and dry toilet, hoist, changing bench and adjustable basin. Changing Places are enhanced disabled toilet facilities for people with severe disabilities.



Our facilities include a wash and dry toilet, overhead room coverage hoist system, height adjustable changing bench, height adjustable basin, shower and a privacy screen.

A radar key is required to access these facilities.

For health and safety reasons we do not provide slings. Visitors are asked to bring their own which should be compatible with the loop system.

Coronation Park and Recreation Ground



Access to Coronation Park is via a slightly sloped path from the 1950s welfare hall.



Coronation Park includes an accessible swing seat and a wheelchair friendly roundabout.



Accessible toilets (right hand and left hand transfer), Changing Places Facilities and baby changing and feeding facilities are available within the 1950s welfare hall.

Bowling Green and Pavilion



There is level access into the bowling pavilion.



A permanent ramp is in position to allow access onto the bowling green.



Accessible toilets (right hand and left hand transfer), Changing Places Facilities and baby changing and feeding facilities are available within the 1950s welfare hall.

Semi-detached Houses



There is level entry into the semi-detached houses.



Small rooms and furniture throughout the semi-detached houses may make it difficult to turn and manoeuvre mobility scooters.

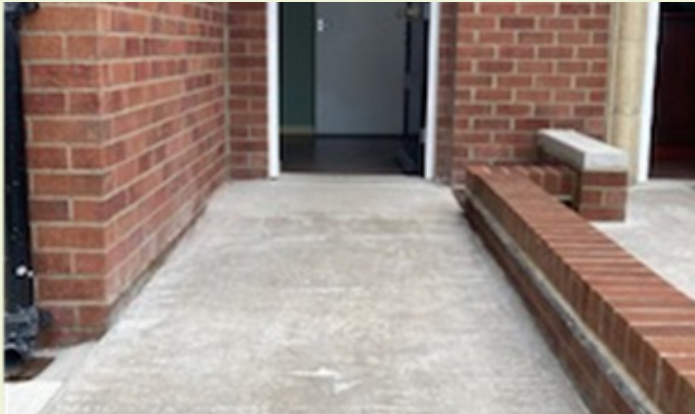
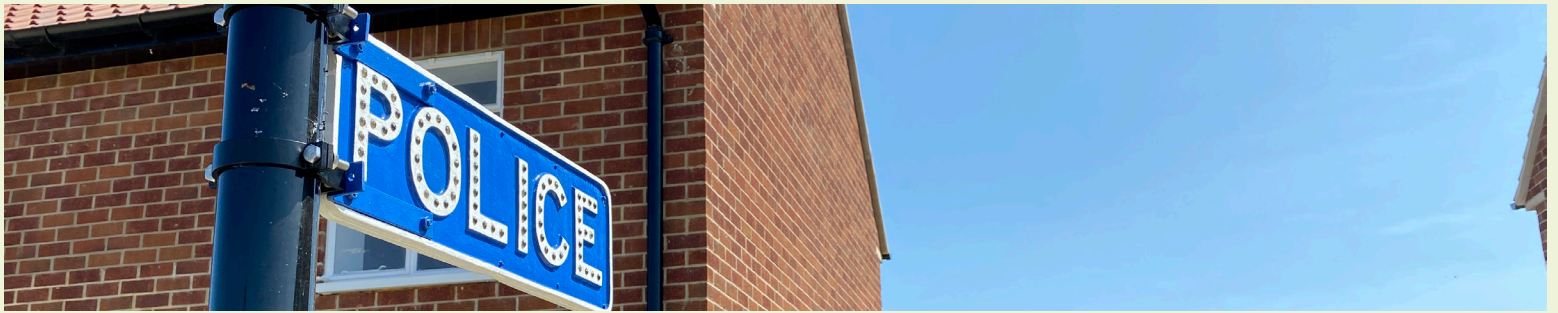


A lift is available for those wishing to visit the first floor. The lift door is not automatic, for those who need assistance opening the door, a bell is positioned next to the handle, this will alert a member of staff who will be able to assist.



Accessible toilets (right hand and left hand transfer), Changing Places Facilities and baby changing and feeding facilities are available within the 1950s welfare hall.

Police Houses



The front entrance of the police houses is accessible via a short ramp.



The rear entrance of the police houses is accessible with dropped kerbs and a flagstone footpath with a slight incline.



The rear of the police houses have outbuildings which can make it difficult for mobility scooters to turn.



Accessible toilets (right hand and left hand transfer), Changing Places Facilities and baby changing and feeding facilities are available within the 1950s welfare hall.

To create an authentic feel, there are a variety of ground surfaces, some of which are uneven by nature. There are steep slopes in places, and some buildings and exhibits have stepped access.



Transport at Beamish Museum

Period buses and trams operate around the site every 20 minutes (approx.). The steps onto the trams and buses are very steep. There are stops near every area. Our historic vehicles can store folded wheelchairs and folded pushchairs although space is limited.

The museum has two assistance buses with tail lifts. These buses can securely carry wheelchairs. Please note that these buses are not able to securely anchor and transport motorised scooters.

A weight restriction of 250kg also applies to the use of the lift on J2007, a weight restriction of 400kg applies to the tail lift on Crosville No.716. We apologise for any inconvenience this may cause.

Accessible Toilets and Changing Places Facilities

There are accessible toilets and baby changing facilities in the following areas:

Entrance Building - Accessible toilets, baby and adult changing facilities also available.

1900s Pit Village - Toilets and accessible toilets at the band hall.

1900s Colliery Yard - Gender neutral toilets, accessible toilets and baby changing facilities in the lamp cabin.

1940s Farm - Toilets and accessible toilets.

1900s Town - Toilets in the Masonic Hall. Accessible toilets and baby changing facilities in tram shelter. Accessible toilets and baby changing facilities in the Tea Rooms.

Fairground - Gender neutral toilets, accessible toilets and baby changing facilities.

Pockerley Old Hall - Toilets and accessible toilets.

1820s Pockerley Waggonway - Toilets and accessible toilets.

Regional Resource Centre - Toilets and accessible toilets.

1950s Welfare Hall - Changing Places Facilities, accessible toilets, accessible baby change and feeding facilities.

1950s Town - Accessible toilets and baby changing facilities are available in John's Café. An accessible toilet is available at Spain's Field Farm.

